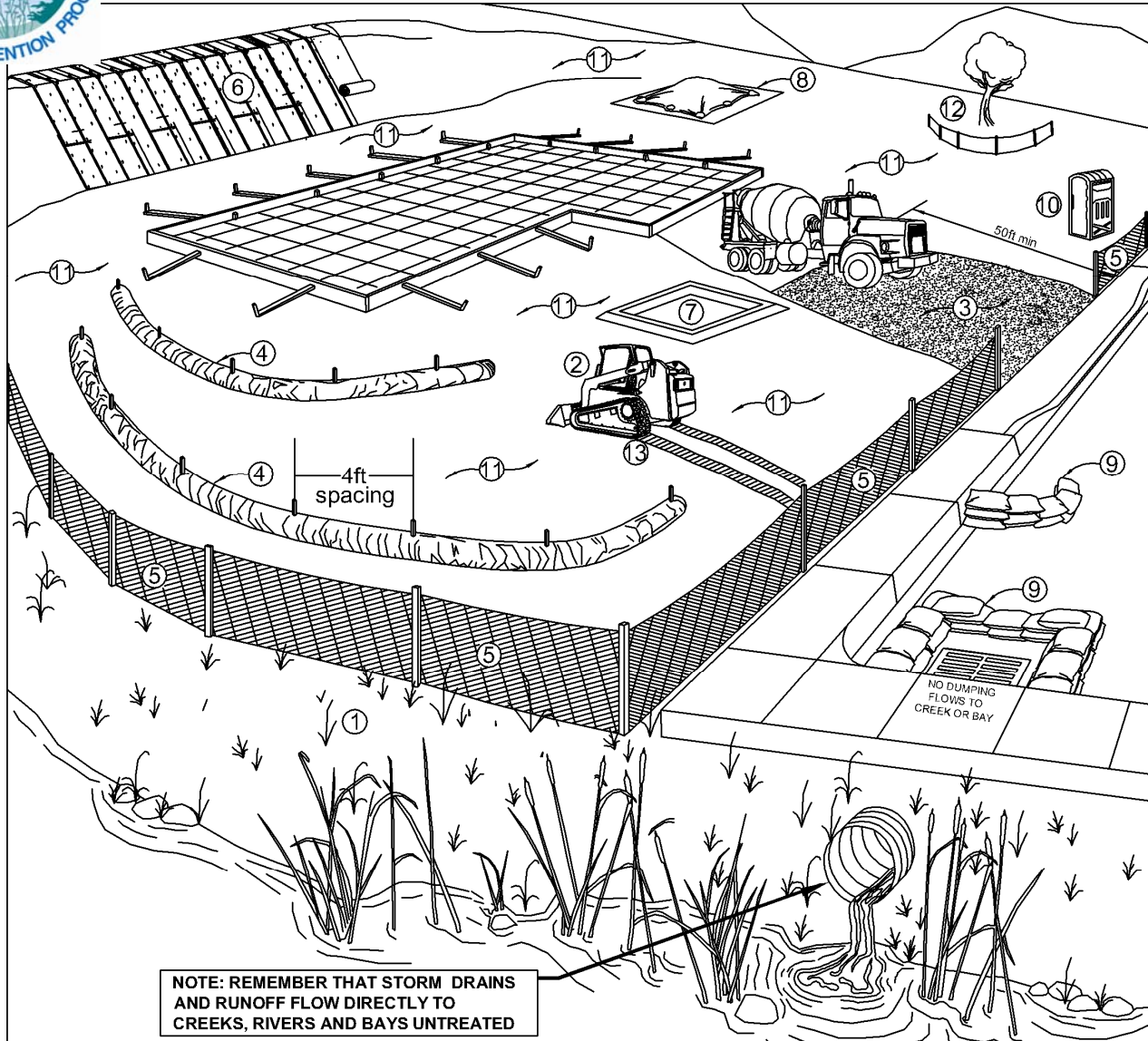




Marin County Stormwater Pollution Prevention Program

Minimum Erosion/Sediment Control Measures For Small Construction Projects

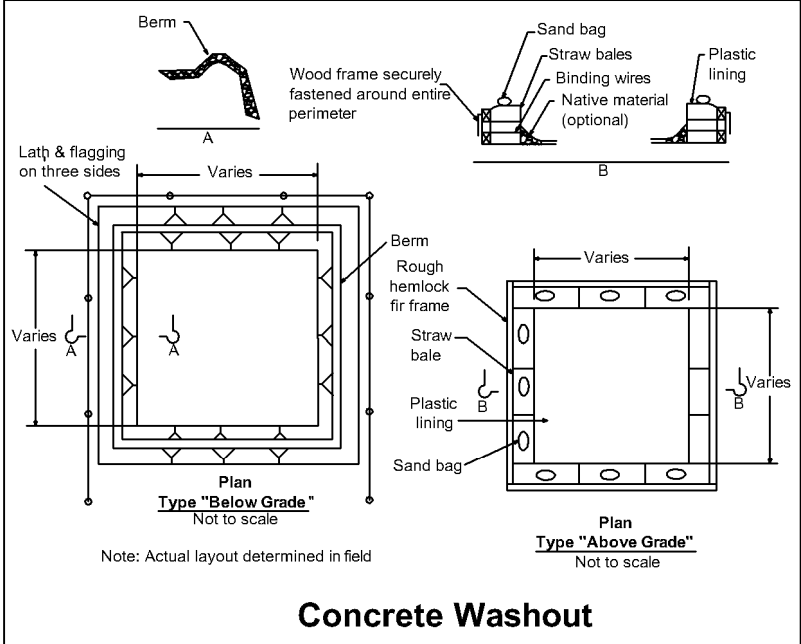
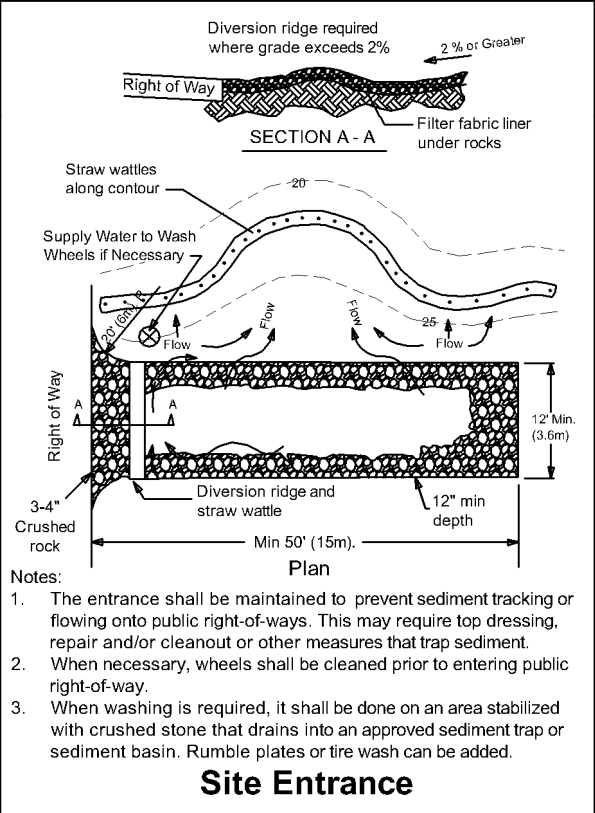
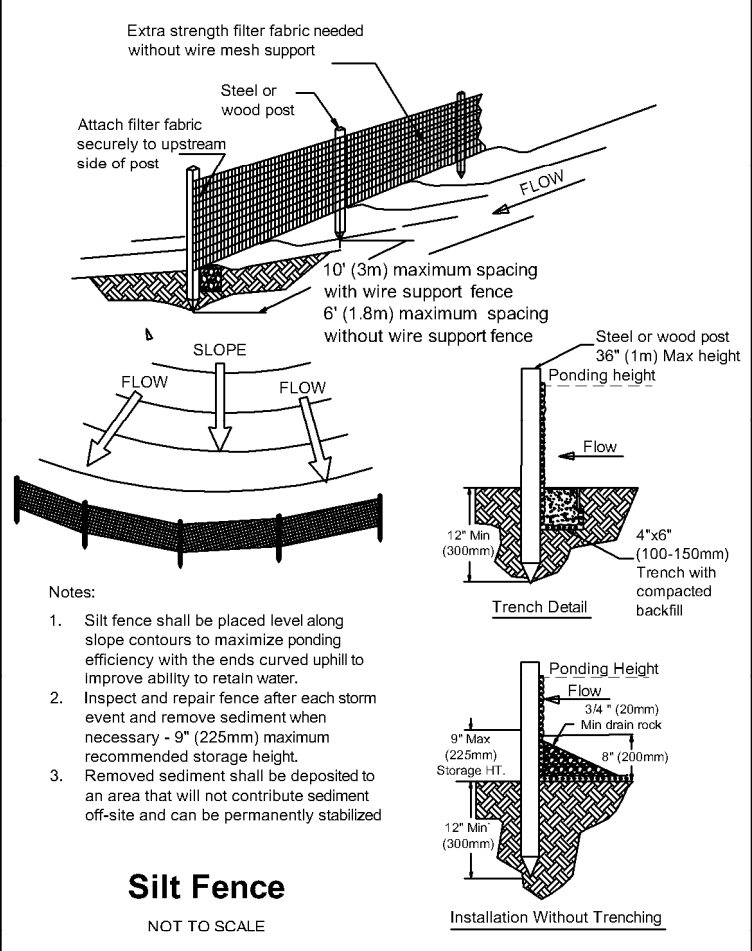
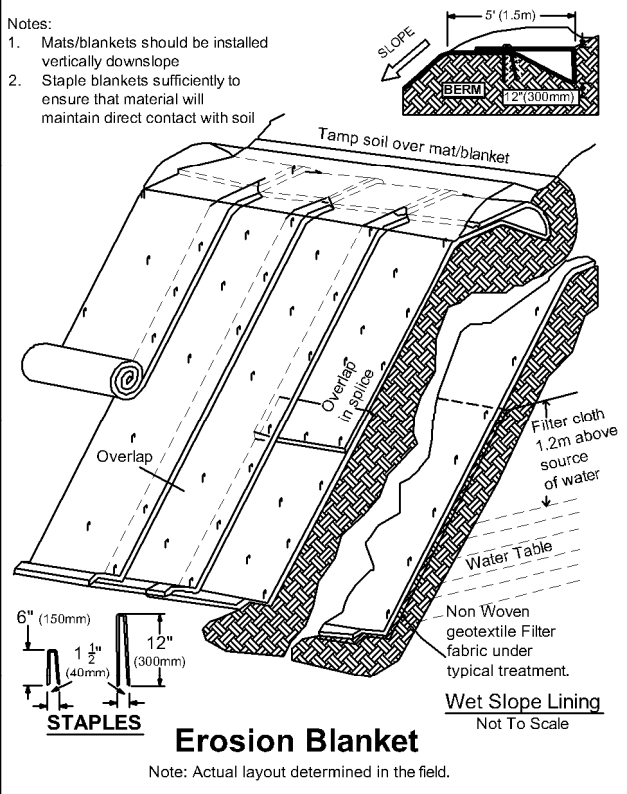


- (1) Check with your local Planning and Public Works departments for creek setback requirements. Grading and/or building may be limited within creekside buffers.
- (2) During grading phase, track-walk up and down slopes (not parallel to them).
- (3) *Stabilize site entrance and temporary driveway – use 3-4” crushed rock for a minimum of 50’ (or as far as possible) to prevent tracking soil offsite. This can be used in conjunction with a tire wash or rumble plates.
- (4) *Use straw wattles along contours of short slopes or slopes 3:1 or flatter, keyed into ground at least 3” deep (typically 25’ apart).
- (5) *Install silt fence along contours as secondary measure to keep sediment onsite and to minimize vehicle and foot traffic beyond limits of site disturbance. Silt fencing must be keyed in.
- (6) *Install erosion control blankets (or equivalent) on any disturbed site with 3:1 slopes or steeper, keyed into the ground at least 3”.
- (7) *Construct a concrete washout site adjacent to stabilized entrance. Clean as needed and remove at end of project.
- (8) Cover all stockpiles and landscape material and berm properly with straw wattles or sand bags. Keep behind silt fence, away from water bodies. Hazardous materials must be kept in closed containers that are covered and utilize secondary containment, not directly on soil.
- (9) *Use pea-gravel bags, (or similar product) around drain inlets located both onsite and in gutter as a last line of defense.
- (10) Place port-a-potty near stabilized site entrance, behind the curb and away from gutters, storm drain inlets, and water bodies.
- (11) Cover all exposed soil with straw mulch and tackifier (or equivalent).
- (12) Existing vegetation should be preserved as much as possible. Areas of disturbed soil/vegetation should be revegetated as soon as practical.
- (13) Prevent equipment fluid leaks onto ground by placing drip pans or plastic tarps under equipment.

Note: Schedule construction activities to reduce erosion potential. Sediment and erosion control shall be continually maintained throughout the rainy season (October 15th – April 15th) and must remain effective through the construction and landscape phases. Inspect and maintain Best Management Practices (BMPs) before and after rain events. *See reverse for detail drawings. Visit www.mcstoppp.org for more information on construction site management.

Notes:

1. Mats/blankets should be installed vertically downslope
2. Staple blankets sufficiently to ensure that material will maintain direct contact with soil



If you require materials in alternative formats, please contact:
415-473-4381 voice/TTY or disabilityaccess@co.marin.ca.us