



Marin County Stormwater Pollution Prevention Program



2013 CALENDAR



Your Choices Make a World of Difference

Our Water — Our World

www.OurWaterOurWorld.org

Fifteen local stores have partnered with the Marin County Stormwater Pollution Prevention Program (MCSTOPPP) to help their customers make more informed decisions when selecting products to manage pests. Next time you shop, ask staff in these stores to assist you in making choices that are better for you, your pets, and the environment.



Store Partners

- Bayside Garden Center
- Fairfax Ace Lumber & Hardware
- Goodman Building Supply
- Jackson's Hardware
- Marin Ace Hardware
- Orchard Supply Hardware (OSH)
- Pini Ace Hardware
- Sloat Garden Centers (5 stores)
- Sunnyside Nursery
- The Home Depot
- Toby's Feed Barn

Plant Them and They Will Come

Find out which flowers attract beneficial insects to your garden. Beneficial insects are nature's way of managing garden pests. Plants with daisy-like flowers or clusters of multiple small flowers are attractive to beneficials.

Request this free brochure from MCSTOPPP by e-mailing mcstoppp@marincounty.org or calling 415-473-3202. It will help you learn how to identify beneficial insects in their larval or nymph form—a stage when they eat even more pests than they do as adults. Insects in their larval form may look different than they do in adult form. See an example in the month of February!



Recycle That Fishing Line!

Discarded fishing line presents a hazard not only for humans and their boats but also for birds, fish, marine mammals, and even land-dwelling mammals. Serious or fatal injuries occur when these animals get entangled and are not rescued and treated.

WildCare manages a fishing line recycling program with bins around Marin. Line collected in these bins is sent to a company that melts it down and uses it to make other products. Hooks deposited in these bins also are disposed of properly.

For more information or locations of bins, call WildCare at 415-456-7283, visit their facility at 76 Albert Park Lane in San Rafael, or go to www.wildcarebayarea.org.



WildCare, San Rafael

Choose A Bay-Friendly Landscaper!

The Marin County Stormwater Pollution Prevention Program and Marin Municipal Water District have been offering a 20-hour **Bay-Friendly Landscape Maintenance Training and Certificate Program** since 2008. The following companies have one or more professionals on staff that are graduates of the Bay-Friendly Training in Marin and can help you create landscaping that protects our creeks, ocean, and Bay!



Alesha Nichole Fine Gardening
415-658-5650

Ann Joseph Consulting
707-373-9611

April Philips Design Works, Inc.
415-457-2774

Art Gardens
415-519-0201

AvidGreen Fine Landscaping, Vineyards and Backyard Farms
415-461-8477

Barbara Huntingdon Landscape Design
415-297-6401

Bay-Friendly Landscape & IPM Consulting and Training
415-454-9615

Bertotti Landscaping
707-559-7077

Buchholz Landscaping Co. Inc.
415-259-0325

Cagwin and Dorward
1-800-891-7710

Checo's Gardening
415-388-9067

Civic Center Landscapes
415-929-9017

Clean Air Lawn Care
415-602-5296

Coffey Landscape
415-455-1003

Frederick S. Sommers Landscaping/Irrigation
415-608-7015

Galvan Landscaping
415-755-8117

Gardens and Gables
415-499-0331

Gardeners Guild, Inc.
415-457-0400

Garth's Gardens
415-505-7034

Gillian Bolter Fine Gardening
415-407-0224

Goldsmith Garden
415-830-1799

Gonlo's Great Gardening
415-233-3146

Good Dragon Landcare
415-446-8550

Greendale Gardens
415-450-0100

Green Door Design
415-300-7411

Green Roots Design
415-994-7251

H & H Garden Service
415-300-6586

Hamlin Landscape Irrigation
415-479-0701

Heritage Landscapes
415-458-8151

Organic
415-482-0184

Pacific Landscapes
707-829-8064

Pedersen Associates, Inc.
415-456-2070

Plannedland
415-420-9128

Quinn's California Landscapes
415-246-2380

Ronald Omori
415-699-6008

Roth LaMotte
415-451-8211

Sacred Space Gardens
415-412-4159

Scandia Landscaping
707-996-7298

S. Jordan Landscaping & Design
415-331-8616

Shades of Green Landscape Architecture
415-332-1485

Simmonds & Associates Landscape Architects
415-460-0460

Terra Cognita Design & Consulting
707-695-9360

Take Action to Protect Local Creeks

- ✳ Make sure automatic sprinklers are not causing runoff into storm drains.
- ✳ Avoid pesticides if possible, or use the least toxic alternative available.
- ✳ Sweep driveways, sidewalks, and gutters, and dispose of debris in the trash.
- ✳ Keep your creek bank free of trash and yard clippings.
- ✳ Contact MCSTOPPP and your local sanitary district before draining your pool or spa.
- ✳ Take your car to a car wash instead of washing it in your driveway, or direct wash water to a vegetated area where it can soak in.
- ✳ Vegetate bare spots in your yard with native plants, and spread mulch to reduce weeds.
- ✳ Report illegal discharges to storm drains at www.mcstoppp.org, or call your local stormwater coordinator listed on the back page.



Wash Your Car the Fish-Friendly Way!

If you wash your car at home, use soap sparingly, use a trigger hose to reduce your water use, and divert the wash water to a vegetated area where the soil can filter out some of the pollutants. Soap, even if it's biodegradable, is harmful to fish. If your wash water flows to a storm drain, it goes directly to a local creek or the Bay!



If you plan to hold a car wash fundraiser, borrow a Fish-Friendly Car Wash Kit from MCSTOPPP! The kit contains everything you need to hold a car wash without harming water quality and aquatic life. Call 415-473-3202 for more information.

Thank You to Our Sponsors

Marin County Stormwater Pollution Prevention Program
 Marin County Wastewater Treatment Agencies
 Marin Independent Journal
 Marin Municipal Water District

Special thanks to our photographers, Craig Solin and Susan Van Der Wal, who have been providing the majority of calendar photos since 2002.



Marin Independent Journal
 digitalfirst | marinij.com

Coleman Cosby Landscape Design & Installation

415-606-7993

Dig Your Garden Landscape Design

415-453-8591

Doniel Ellis Designs

415-637-3941

Dri-Water, Inc.

707-206-1437

Earthscapes

415-531-8499

Edger Landscape Design

415-328-7772

Equinox Landscape

415-456-6480

Fairfax Lumber and Hardware

415-453-4410

Farias Garden Service, Inc.

415-479-8301

Favorite Gardens

415-686-1987

Flora & Fauna Landscaping

415-847-4520

Flora Shanti Gardens

415-331-2663

Forester Landscaping

415-381-0740

Hines

415-398-8655

Integrated Landscape Services

415-378-0644

Janscapes Landscape Designer

415-302-3619

Jasmin Landscape

415-382-0385

Joan Hasselgren Healing Gardens

415-351-9751

Kaiser Gardens, Inc.

415-699-7423

Linda's Landscape Design & Pruning

415-846-8810

Lisa Canepa Garden Design

415-515-2418

L.J. Novy & Associates

415-457-5268

Marizco Landscape Management

707-546-9100

North Bay Landscape Management, Inc.

707-762-3850

O'Connell Landscape

415-462-9729

Olivotti Landscape

415-819-1939

Terra Ferma Landscapes, Inc.

415-929-0333

Terrasophia

415-306-6618

The Land Collaborative (TLC)

415-272-3284

Tigerlily Gardens

415-218-3037

U Chang Shim Garden Design

415-892-8364

Vaca Landscape

415-847-7332

ValleyCrest Companies

925-924-8900

Wave Hill Irrigation & Landscaping

415-408-8301

Yarish Landscape Consulting

707-779-9012

PUBLIC AGENCIES WITH BAY-FRIENDLY GRADUATES

City of Rohnert Park
 City of San Rafael
 Marin County Parks
 Marin Municipal Water District
 Reed Union School District
 Solano Community College
 Town of Ross

Marin County Stormwater Pollution Prevention Program

415-473-3202 • mcstoppp@marincounty.org • www.mcstoppp.org

MCSTOPPP is administered by the
 Marin County Flood Control and Water Conservation District

MCSTOPPP Staff

Terri Fashing • Program Manager
 Howard Bunce • Engineering Technician
 Gina Purin • Community Outreach Coordinator

Calendar

Project Management • MCSTOPPP Staff
 Design • Laura Lovett | By Design
 Printing • P&B Productions

If you are a person with a disability and require materials in alternative formats, please call 415-473-4381 (voice) or CRS 711, or e-mail disabilityaccess@marincounty.org.

Recycle Used Motor Oil—Protect Wildlife



A Black-necked Stilt foraging in Bothin Marsh; photo by Pat Ulrich.

You can help protect wildlife, including water birds, by recycling your used oil and filters.

When motor oil is not managed properly and enters a waterway, it can coat the feathers of birds, making it difficult for them to fly and stay warm. It also can be ingested by birds as they preen themselves.



Robert Hinz

From October through March, thousands of water birds rest and feed in the waters off Richardson Bay Audubon Center & Sanctuary.

January



Len Blumin

The Surf Scoter is one of over 150 bird species that feed along Marin's coastline.

More Reasons to Recycle Your Used Oil and Filters

- * Oil on water can kill microscopic plankton and algae that form the base of the marine food web.
- * Oil degrades slowly, picking up toxic chemicals and heavy metals as it cycles through your car's engine.
- * By recycling used oil and filters, you can take pride in your ride and the environment!



Take used motor oil and filters to a FREE collection center listed on the back cover of this calendar.

SUNDAY							MONDAY							TUESDAY							WEDNESDAY							THURSDAY							FRIDAY							SATURDAY																																		
DECEMBER 2012														1							2							3							4							5																																		
S	M	T	W	T	F	S																																																																						
2	3	4	5	6	7	8																																																																						
9	10	11	12	13	14	15																																																																						
16	17	18	19	20	21	22																																																																						
23	24	25	26	27	28	29								New Year's Day																																			last quarter ☾																											
30	31																																																																											
6							7							8							9							10							11							12																																		
13							14							15							16							17							18							19																																		
20							21							22							23							24							25							26																																		
27							28							29							30							31														FEBRUARY																																		
full moon ☉																																																																												



OIL FACT: A film of oil on the surface of water prevents the replenishment of dissolved oxygen, impairs photosynthetic processes, and blocks sunlight.

For recycling and/or disposal of used motor oil, filters, paints, pesticides, solvents, and other household hazardous wastes, visit one of the free collection facilities listed on the back cover, or call 1-800-CleanUp. You can also download a free iRecycle App on your iOS, iPad, or Android smartphone.



Protect our water and wildlife! Repair oil leaks to keep oil from getting on streets where it can enter a storm drain and be carried to a local creek; recycle used motor oil and filters and make sure your mechanic does as well; and e-mail MCSTOPPP at mcstoppp@marincounty.org for this free brochure.

Healthy Landscapes Benefit Everyone



Gravel paths, vegetable beds, and low-water-use grasses replace what was once a lawn; photo by Simmonds & Associates.

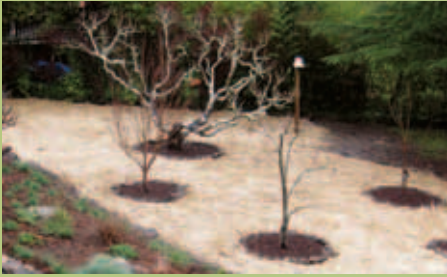
Creating healthy soil, conserving water, reducing waste, and protecting water quality in creeks and bays are some of the principles of Bay-Friendly Landscaping. Bay-Friendly landscapers minimize the use of plastics and pesticides, and they water and fertilize judiciously. They also create and protect wildlife habitat, and divert plant debris from the landfill.



Craig Solin

Bay-Friendly gardens are havens for birds, like this American Robin.

FEBRUARY



Gina Purfin, MCSTOPPP

Practice Prevention and Reduce Your Reliance on Pesticides

- * Prune out aphid populations before they get out of control.
- * Apply mulch over exposed soil to help control weeds and erosion.
- * Use compost or slow-release fertilizers that allow grass and plants to absorb nutrients more efficiently.
- * Move plants that grow too close to the house, caulk holes in buildings, and put weather-stripping on doors and windows to prevent ants from getting inside your home.
- * Attract beneficial insects like lacewings (below) to help control garden pests like aphids and mealybugs.



Bruce Martin

SUNDAY	MONDAY	TUESDAY	WEDNESDAY	THURSDAY	FRIDAY	SATURDAY
Susan Van Der Wal 	 Edward S. Ross Ladybugs, a beneficial insect, sometimes are mistaken for garden pests when in their larval form (right).				1	2 Groundhog Day
3 last quarter 	4	5	6	7	8	9
10 new moon  Chinese New Year	11	12 Lincoln's Birthday	13	14 Valentine's Day	15	16
17 first quarter 	18 Presidents Day	19	20	21	22 Washington's Birthday	23
24	25	26	27	28	JANUARY S M T W T F S 1 2 3 4 5 6 7 8 9 10 11 12 13 14 15 16 17 18 19 20 21 22 23 24 25 26 27 28 29 30 31	
	full moon 				MARCH S M T W T F S 1 2 3 4 5 6 7 8 9 10 11 12 13 14 15 16 17 18 19 20 21 22 23 24 25 26 27 28 29 30 31	



OIL FACT: Used motor oil is recycled and cleaned by special companies and used again. For example, some popular NASCAR racing teams used recycled motor oil in the 2012 Daytona 500 race!

For recycling and/or disposal of used motor oil, filters, paints, pesticides, solvents, and other household hazardous wastes, visit one of the free collection facilities listed on the back cover, or call 1-800-CleanUp. You can also download a free iRecycle App on your iOS, iPad, or Android smartphone.



When hiring a landscaper, choose one trained in Bay-Friendly practices! They promote healthy gardens for you, your family, and your pets. E-mail MCSTOPPP at mcstoppp@marincounty.org or call 473-3202 for this free brochure. See the inside front cover for more information.

Find Your Garden's Water Needs



California poppies appear after the winter rains; photo courtesy of MMWD.

Get a beautiful garden without overwatering. Many people turn on their irrigation systems full tilt as soon as the rainy season ends. But in spring, gardens need on average about one-third less irrigation than in summer.

Over the course of the irrigation season, your plants' water needs will vary significantly depending on weather conditions, day length, and other factors. By adjusting your irrigation schedule weekly, you'll save water and money while maintaining a healthy garden.



Ann Vallee

Spring and fall "shoulder" months are when people tend to overwater most.

MARCH

Volunteer and Make a Difference



Gallinas Creek winds past McInnis Park on its way to the Bay; photo by Craig Solin.

This year, give a few hours of your time celebrating Earth Day! Last year, over 35 organizations and more than 1,200 volunteers rolled up their sleeves and uncapped their canteens on a few exceptionally sunny days to pick up litter from streets and creeks; build or maintain trails; plant natives; and remove invasive species from marshlands, beaches, and parks. This three-day effort helped keep Marin clean and green.



Logo by Kahl Consultants

Sign up for an Earth Day project or post a project for which you need volunteers at www.myeearthdaymarin.org.

APRIL



Kirk Schroeder, Marin County Parks

An Earth Day volunteer keeps weeds at bay and conserves water by spreading mulch.


Volunteers Play a Crucial Role

At Marin County Parks, volunteers of all ages pull invasive weeds to protect native vegetation in parks and open space preserves.

This helps support the County's Integrated Pest Management—a less toxic approach to controlling invasive plants.

Help is needed on Earth Day, and throughout the year, to remove plants like French broom, plant natives, and spread mulch.

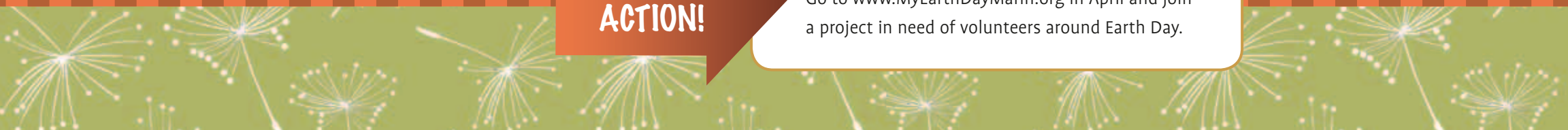
Call 415-473-3778 or go to www.MarinOpenSpace.org.

SUNDAY							MONDAY	TUESDAY	WEDNESDAY	THURSDAY	FRIDAY	SATURDAY
MARCH S M T W T F S 1 2 3 4 5 6 7 8 9 10 11 12 13 14 15 16 17 18 19 20 21 22 23 24 25 26 27 28 29 30 31							1	2	3	4	5	6
7							8	9	10	11	12	13
14							15	16	17	18	19	20
21							22	23	24	25	26	27
28							29	30	<i>One of the biggest threats to the Ring Mountain Open Space Preserve is pampas grass.</i>			
MAY S M T W T F S 1 2 3 4 5 6 7 8 9 10 11 12 13 14 15 16 17 18 19 20 21 22 23 24 25 26 27 28 29 30 31							 <p>OIL FACT: Used oil filters can contain more than 45 percent used motor oil in weight when removed from the vehicle. Please recycle used oil filters.</p> <p>For recycling and/or disposal of used motor oil, filters, paints, pesticides, solvents, and other household hazardous wastes, visit one of the free collection facilities listed on the back cover, or call 1-800-CleanUp. You can also download a free iRecycle App on your iOS, iPad, or Android smartphone.</p>					

Elwood W. McKay III



Lend a hand for Mother Earth!
 Go to www.MyEarthDayMarin.org in April and join a project in need of volunteers around Earth Day.



Protect Our Creeks from Pesticides



Native plants add a burst of color in this pesticide-free garden; photo by Charlotte Torgovitsky.

You can have a beautiful garden, like the one at left, without using chemicals called pyrethroids that can harm water quality and aquatic insects.

Pyrethroids are pesticides commonly used to manage insects around buildings, on lawns, in gardens, and indoors. When they are applied outdoors, rain and overwatering can wash these chemicals away from streets and walkways and into storm drains and creeks.



Craig Solin

Research is linking the loss of honeybee colonies to use of pyrethroids.

may

Love Your Pet and Your Environment



Dog near Bald Hill in Fairfax; photo by Craig Solin.

Whether you're out for a neighborhood stroll or hiking to the top of Mount Tam, consider yourself lucky: you're outside in Marin County! If your walking companion happens to be a dog, you can help keep Marin beautiful and healthy by picking up after your pet. Don't leave pet waste behind for others to find. Take it with you and put it in the trash.



John Goldsmith

Okie runs at Mill Valley Dog Park with Mount Tam in the background.

June





Janet Blair

Protect Our Local Waterways by Following a Few Simple Practices

- Take bags with you and clean up after your pet.
- Keep your dog on a leash where required and when walking along creeks and wetlands—especially from September through May, when salmonids are spawning and hatching.
- Avoid washing pet waste into storm drains. Storm drains flow directly into local creeks, bays, or the ocean.



Howard Bunce, MCSTOPPP

SUNDAY							MONDAY							TUESDAY							WEDNESDAY							THURSDAY							FRIDAY							SATURDAY						
MAY							JULY							<p><i>Pet waste in water takes up oxygen needed for the survival of fish. It also contains nutrients that promote weed and algae growth.</i></p>  <p>Rob Ruiz</p>																					1													
S	M	T	W	T	F	S	S	M	T	W	T	F	S																																			
5	6	7	8	9	10	11	7	8	9	10	11	12	13																																			
12	13	14	15	16	17	18	14	15	16	17	18	19	20																																			
19	20	21	22	23	24	25	21	22	23	24	25	26	27																																			
26	27	28	29	30	31	28	29	30	31																																							
2							3							4							5							6							7							8						
9							10							11							12							13							14							15						
16							17							18							19							20							21							22						
first quarter Father's Day																																			Summer begins													
23							24							25							26							27							28							29						
full moon																																																
30																																																
last quarter							 <p>OIL FACT: One gallon of used motor oil can create an eight-acre oil slick.</p>							<p>For recycling and/or disposal of used motor oil, filters, paints, pesticides, solvents, and other household hazardous wastes, visit one of the free collection facilities listed on the back cover, or call 1-800-CleanUp. You can also download a free iRecycle App on your iOS, iPad, or Android smartphone.</p>																																		

TAKE ACTION!

Your dog can't help it, but you can!

Pick up after your pet, seal in a bag, and place it in a covered trash receptacle. Call MCSTOPPP at 473-3202 or e-mail mcstoppp@marincounty.org to receive a supply of "Pick It Up!" bookmarks to distribute and help educate dog owners.



Create Permeable Walkways & Patios



This flagstone pathway was once a lawn; photo by Gina Purin, MCSTOPPP.

When constructing a new walkway, patio, or driveway, consider using permeable paving or sloping the pavement toward a vegetated area so rainwater runs off and soaks into the soil.

This will reduce the amount and speed at which rainwater flows from your property into a storm drain or creek, which in turn can help reduce erosion, prevent water pollution, and support creek habitat.



Barbara Huntingdon

River rock, cut aggregate, and pea gravel make up this artsy—and permeable—walkway.

JULY

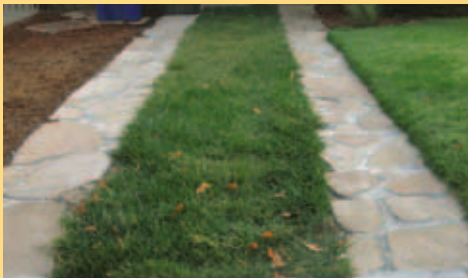


Pervious concrete allows rain to soak into the underlying soil.

Plan Ahead for Your Next Project

Consider using materials that have a lesser impact on the land, like these:

- * Mulch, gravel, or wood chips work well in low-traffic areas.
- * Pervious concrete or porous asphalt is good in high-traffic areas.
- * Turf block works well in medium-traffic areas.
- * Paver stones are good for high-traffic areas and patios.
- * Ribbon driveways also help capture rainwater (below).



SUNDAY	MONDAY	TUESDAY	WEDNESDAY	THURSDAY	FRIDAY	SATURDAY																																																																																																																	
	1	2	3	4 Independence Day	5	6																																																																																																																	
7	8 new moon ●	9 Ramadan begins	10	11	12	13																																																																																																																	
14	15	16	17 first quarter ◐	18	19	20																																																																																																																	
21	22 full moon ○	23	24	25	26	27																																																																																																																	
28	29 last quarter ◑	30	31	<table border="1"> <thead> <tr> <th colspan="7">JUNE</th> <th colspan="7">AUGUST</th> </tr> <tr> <th>S</th><th>M</th><th>T</th><th>W</th><th>T</th><th>F</th><th>S</th> <th>S</th><th>M</th><th>T</th><th>W</th><th>T</th><th>F</th><th>S</th> </tr> </thead> <tbody> <tr> <td></td><td></td><td></td><td></td><td></td><td></td><td>1</td> <td></td><td></td><td></td><td></td><td></td><td>1</td><td>2</td><td>3</td> </tr> <tr> <td>2</td><td>3</td><td>4</td><td>5</td><td>6</td><td>7</td><td>8</td> <td>4</td><td>5</td><td>6</td><td>7</td><td>8</td><td>9</td><td>10</td> </tr> <tr> <td>9</td><td>10</td><td>11</td><td>12</td><td>13</td><td>14</td><td>15</td> <td>11</td><td>12</td><td>13</td><td>14</td><td>15</td><td>16</td><td>17</td> </tr> <tr> <td>16</td><td>17</td><td>18</td><td>19</td><td>20</td><td>21</td><td>22</td> <td>18</td><td>19</td><td>20</td><td>21</td><td>22</td><td>23</td><td>24</td> </tr> <tr> <td>23</td><td>24</td><td>25</td><td>26</td><td>27</td><td>28</td><td>29</td> <td>25</td><td>26</td><td>27</td><td>28</td><td>29</td><td>30</td><td>31</td> </tr> <tr> <td></td><td></td><td></td><td></td><td></td><td></td><td>30</td> <td></td><td></td><td></td><td></td><td></td><td></td><td></td> </tr> </tbody> </table>		JUNE							AUGUST							S	M	T	W	T	F	S	S	M	T	W	T	F	S							1						1	2	3	2	3	4	5	6	7	8	4	5	6	7	8	9	10	9	10	11	12	13	14	15	11	12	13	14	15	16	17	16	17	18	19	20	21	22	18	19	20	21	22	23	24	23	24	25	26	27	28	29	25	26	27	28	29	30	31							30								
JUNE							AUGUST																																																																																																																
S	M	T	W	T	F	S	S	M	T	W	T	F	S																																																																																																										
						1						1	2	3																																																																																																									
2	3	4	5	6	7	8	4	5	6	7	8	9	10																																																																																																										
9	10	11	12	13	14	15	11	12	13	14	15	16	17																																																																																																										
16	17	18	19	20	21	22	18	19	20	21	22	23	24																																																																																																										
23	24	25	26	27	28	29	25	26	27	28	29	30	31																																																																																																										
						30																																																																																																																	



OIL FACT: Oil dumped on land reduces soil productivity.

For recycling and/or disposal of used motor oil, filters, paints, pesticides, solvents, and other household hazardous wastes, visit one of the free collection facilities listed on the back cover, or call 1-800-CleanUp.



Ginger Souderis-Mason

TAKE ACTION!

Learn more about permeable paving!

Check out *Slow It. Spread It. Sink It. Eco-Friendly Solutions for Managing Rainwater on Your Property*, at www.mcstoppp.org/acrobat/SlowSpreadSink_Marin.pdf.

Don't Plant a Pest



Invasive broom in the Loma Alta Preserve, Marin County Parks; photo by Craig Solin.

Many invasive plants came to California as attractive additions to gardens. They were considered to be invasive only when they escaped and began to take over natural areas. One such pervasive pest is French broom. A single plant can produce over 30,000 seeds, which can remain viable for 80 years or more. On Mount Tam, the equivalent of 800 football fields of broom threaten to choke off native plants, including seven found nowhere else in the world.



Mark Whitaker

Broom may provide a colorful show on the hills, but it forms dense stands up to 16 feet tall and poses a fire danger.

august



Susan Van Der Wal

Ice plant crowds out other species, posing a serious ecological problem in the wild.

Do Your Part to Prevent the Spread of Invasive Species

- ✿ Plant native species in your garden.
- ✿ Remove invasive species on your property.
- ✿ Help Marin County Parks reduce the 850 acres already impacted by French broom by volunteering to help pull it.
- ✿ People living near open space preserves and creeks should be particularly careful when choosing plants for their gardens in order to protect our native plant species.



Craig Solin

Thistles on Sleepy Hollow Preserve.

SUNDAY	MONDAY	TUESDAY	WEDNESDAY	THURSDAY	FRIDAY	SATURDAY
	JULY S M T W T F S 1 2 3 4 5 6 7 8 9 10 11 12 13 14 15 16 17 18 19 20 21 22 23 24 25 26 27 28 29 30 31	SEPTEMBER S M T W T F S 1 2 3 4 5 6 7 8 9 10 11 12 13 14 15 16 17 18 19 20 21 22 23 24 25 26 27 28 29 30		1	2	3
4	5	6 new moon ●	7 Ramadan ends	8	9	10
11	12	13	14 first quarter ◐	15	16	17
18	19	20	21 full moon ○	22	23	24
25	26	27	28 last quarter ◑	29	30	31



OIL FACT: Recycling all the filters sold annually in the United States would result in the recovery of about 160,000 tons of steel—enough to make 16 new stadiums the size of Atlanta’s Turner Stadium.

For recycling and/or disposal of used motor oil, filters, paints, pesticides, solvents, and other household hazardous wastes, visit one of the free collection facilities listed on the back cover, or call 1-800-CleanUp. You can also download a free iRecycle App on your iOS, iPad, or Android smartphone.

TAKE ACTION!

Learn about alternatives to pest plants!

Go to www.cal-ipc.org/landscaping/dpp/index.php or call MCSTOPPP at 473-3202 and request a copy of *Don't Plant a Pest!*

Don't plant a pest!

Give them an inch and they'll take an acre...



Help Keep Our Coast Clean



Native Douglas iris on the bluff overlooking Drakes Estero and Limantour Beach, Point Reyes National Seashore; photo by Susan Van Der Wal.

Every year on Coastal Cleanup Day, volunteers clean up Marin's beaches, creeks, and trails. In 2012, about 1,600 volunteers collected more than 19,000 pounds of trash and 2,000 pounds of recyclables!

These efforts reduce the amount of trash in the ocean and help protect marine wildlife. Join volunteers on Coastal Cleanup Day 2013 to keep our creeks, trails, and coasts clean!



Washed Ashore Project

Lidia is a sculpture created with debris removed from beaches. Learn more at www.washedashore.org.

SEPTEMBER



Kirk Schroeder, Marin County Parks

Help Us Prevent Litter

- * Toss extinguished cigarettes in the trash, not out car windows or on the ground. Cigarettes and their filters are the number one item picked up on Coastal Cleanup Day.
- * Volunteer on Coastal Cleanup Day. Visit www.tinyurl.com/MarinCleanup.
- * Place trash in cans with lids.
- * Bring your own dinnerware and cutlery to picnics.
- * Keep a reusable bag in your car to use when shopping.



Smokers can help improve water quality by keeping cigarette butts off our streets and out of storm drains.

SUNDAY	MONDAY	TUESDAY	WEDNESDAY	THURSDAY	FRIDAY	SATURDAY																																																																																																
1	2 Labor Day	3	4 Rosh Hashanah begins at sunset	5 new moon ●	6	7																																																																																																
8	9	10	11	12 first quarter ◐	13 Yom Kippur begins	14																																																																																																
15	16	17	18	19 full moon ○	20	21 Coastal Cleanup Day																																																																																																
22 Autumn begins	23	24	25	26	27 last quarter ◑	28																																																																																																
29	30	<table border="1"> <thead> <tr> <th colspan="7">AUGUST</th> <th colspan="7">OCTOBER</th> </tr> <tr> <th>S</th><th>M</th><th>T</th><th>W</th><th>T</th><th>F</th><th>S</th> <th>S</th><th>M</th><th>T</th><th>W</th><th>T</th><th>F</th><th>S</th> </tr> </thead> <tbody> <tr> <td></td><td></td><td></td><td></td><td>1</td><td>2</td><td>3</td> <td></td><td></td><td>1</td><td>2</td><td>3</td><td>4</td><td>5</td> </tr> <tr> <td>4</td><td>5</td><td>6</td><td>7</td><td>8</td><td>9</td><td>10</td> <td>6</td><td>7</td><td>8</td><td>9</td><td>10</td><td>11</td><td>12</td> </tr> <tr> <td>11</td><td>12</td><td>13</td><td>14</td><td>15</td><td>16</td><td>17</td> <td>13</td><td>14</td><td>15</td><td>16</td><td>17</td><td>18</td><td>19</td> </tr> <tr> <td>18</td><td>19</td><td>20</td><td>21</td><td>22</td><td>23</td><td>24</td> <td>20</td><td>21</td><td>22</td><td>23</td><td>24</td><td>25</td><td>26</td> </tr> <tr> <td>25</td><td>26</td><td>27</td><td>28</td><td>29</td><td>30</td><td>31</td> <td>27</td><td>28</td><td>29</td><td>30</td><td>31</td><td></td><td></td> </tr> </tbody> </table>		AUGUST							OCTOBER							S	M	T	W	T	F	S	S	M	T	W	T	F	S					1	2	3			1	2	3	4	5	4	5	6	7	8	9	10	6	7	8	9	10	11	12	11	12	13	14	15	16	17	13	14	15	16	17	18	19	18	19	20	21	22	23	24	20	21	22	23	24	25	26	25	26	27	28	29	30	31	27	28	29	30	31			<p>Kirk Schroeder</p> <p><i>Volunteers sort recyclables on Coastal Cleanup Day 2012 at Hal Brown Park in Greenbrae.</i></p>
AUGUST							OCTOBER																																																																																															
S	M	T	W	T	F	S	S	M	T	W	T	F	S																																																																																									
				1	2	3			1	2	3	4	5																																																																																									
4	5	6	7	8	9	10	6	7	8	9	10	11	12																																																																																									
11	12	13	14	15	16	17	13	14	15	16	17	18	19																																																																																									
18	19	20	21	22	23	24	20	21	22	23	24	25	26																																																																																									
25	26	27	28	29	30	31	27	28	29	30	31																																																																																											



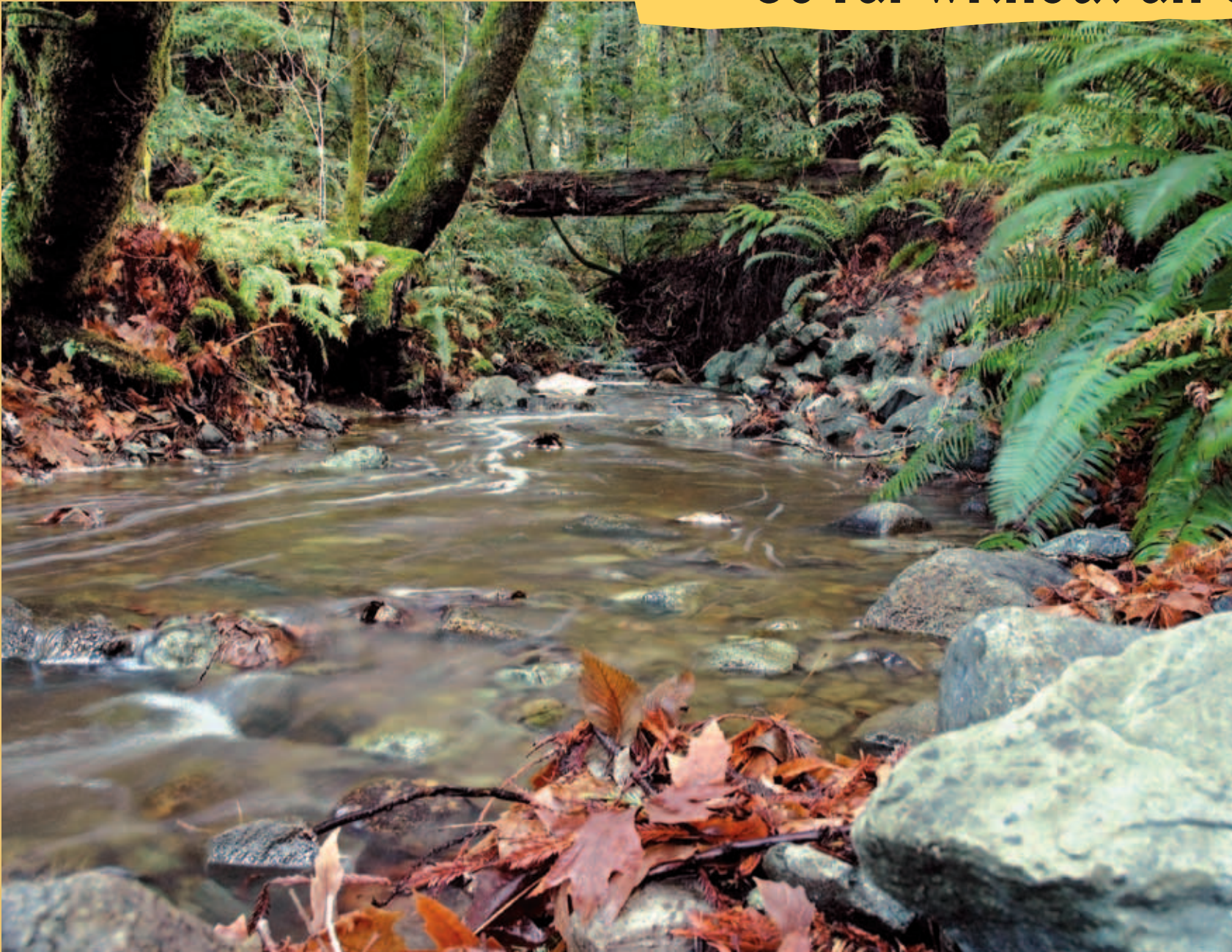
OIL FACT: Re-refining oil is energy efficient. Less energy is required to produce a gallon of re-refined base stock than to produce base stock from crude oil.

For recycling and/or disposal of used motor oil, filters, paints, pesticides, solvents, and other household hazardous wastes, visit one of the free collection facilities listed on the back cover, or call 1-800-CleanUp. You can also download a free iRecycle App on your iOS, iPad, or Android smartphone.



No more butts! In San Rafael alone, 10,000 cigarette butts, on average, are tossed on city streets every four days! Cigarette filters are made of plastic and are toxic to wildlife. Join San Rafael Clean in their campaign to remove cigarette butts from city streets. Learn more at www.SanRafaelClean.org.

Go Far without an Oil Change



Arroyo Avichi, a tributary of Novato Creek; photo by Craig Solin.

The oil from a single oil change can pollute almost 16 miles of creek water. That's like driving from the Golden Gate Bridge to Novato!

Help reduce our reliance on oil by NOT changing your car's oil so often! With today's advanced technologies, many car makers confirm that their vehicles can maintain top performance and engine life while going longer between oil changes.



Marquicio Pagola

Now you can save time—and money—by not changing your oil as often!

OCTOBER



Howard Bunce, MCSTOPPP

Forget the 3,000-Mile Rule

A recent survey by CalRecycle indicates almost 10 million Californians change their motor oil every 3,000 miles or less. Frequent oil changes do not necessarily mean better performance or longer engine life. By following the manufacturer's recommendations, you will not only do right by your ride, but you'll also benefit the environment. Check your owner's manual or go to www.CheckYourNumber.org to find the recommended oil change interval for popular vehicle models.



Craig Sollin

Some cars require more care than others.

SUNDAY	MONDAY	TUESDAY	WEDNESDAY	THURSDAY	FRIDAY	SATURDAY
	SEPTEMBER S M T W T F S 1 2 3 4 5 6 7 8 9 10 11 12 13 14 15 16 17 18 19 20 21 22 23 24 25 26 27 28 29 30	1	2	3	4	5 new moon ●
6	7	8	9	10	11 first quarter ◐	12
13	14 Columbus Day	15	16	17	18 full moon ○	19
20	21	22	23	24	25	26 last quarter ◑
27	28	29	30	31 Halloween		NOVEMBER S M T W T F S 1 2 3 4 5 6 7 8 9 10 11 12 13 14 15 16 17 18 19 20 21 22 23 24 25 26 27 28 29 30



OIL FACT: 2.5 quarts of re-refined lubricating oil can be produced from one gallon of used oil.

For recycling and/or disposal of used motor oil, filters, paints, pesticides, solvents, and other household hazardous wastes, visit one of the free collection facilities listed on the back cover, or call 1-800-CleanUp. You can also download a free iRecycle App on your iOS, iPad, or Android smartphone.

TAKE ACTION!

Check your number! Learn how far your vehicle's engine can go without an oil change. For more information go to www.CheckYourNumber.org.



The Bay: Just a Drain Away



San Francisco Bay and the Golden Gate Bridge from Fort Baker; photo by Susan Van Der Wal.

Through a series of underground pipes, the wastewater treatment plant accepts wastewater from indoor drains that are connected to showers, sinks, toilets, etc. At the plant, the water is “cleaned” before it’s discharged into a large body of water like San Francisco Bay. Some chemicals in products like herbicides, pesticides, solvents, and pharmaceuticals can’t be removed completely and pass through the plant, ending up in the Bay. Such products should never be flushed down toilets or drains.



Kate Monakhova

Diapers and wipes cause big problems in the sewers and at the treatment plant. Never flush them.

november

Prevent Hazardous Materials from Reaching San Francisco Bay

Residents and businesses can help prevent the release of metals, including mercury and copper, and chemicals such as dioxin, polychlorinated biphenyls (PCBs), pesticides, and cyanide into the Bay. Just take the following items to the household hazardous waste collection site (see back cover):

- * Mercury-containing thermometers, thermostats, fluorescent and compact fluorescent bulbs;
- * Household chemicals, such as weed or bug killers and pool chemicals; and
- * Any unknown substance.



striped bass

Steven G. Johnson

Many sport fish in San Francisco Bay, and some fish outside the Bay, contain mercury that can be passed on to humans who ingest the fish. For more information on mercury, go to www.oehha.ca.gov/fish.html.

SUNDAY	MONDAY	TUESDAY	WEDNESDAY	THURSDAY	FRIDAY	SATURDAY																																																																																																		
		<p><i>Unused pharmaceuticals can be taken to the Sheriff's Office, and select police departments and pharmacies. See the back cover of this calendar.</i></p>		<table border="1"> <thead> <tr> <th colspan="7">OCTOBER</th> <th colspan="7">DECEMBER</th> </tr> <tr> <th>S</th><th>M</th><th>T</th><th>W</th><th>T</th><th>F</th><th>S</th> <th>S</th><th>M</th><th>T</th><th>W</th><th>T</th><th>F</th><th>S</th> </tr> </thead> <tbody> <tr> <td></td><td></td><td>1</td><td>2</td><td>3</td><td>4</td><td>5</td> <td>1</td><td>2</td><td>3</td><td>4</td><td>5</td><td>6</td><td>7</td> </tr> <tr> <td>6</td><td>7</td><td>8</td><td>9</td><td>10</td><td>11</td><td>12</td> <td>8</td><td>9</td><td>10</td><td>11</td><td>12</td><td>13</td><td>14</td> </tr> <tr> <td>13</td><td>14</td><td>15</td><td>16</td><td>17</td><td>18</td><td>19</td> <td>15</td><td>16</td><td>17</td><td>18</td><td>19</td><td>20</td><td>21</td> </tr> <tr> <td>20</td><td>21</td><td>22</td><td>23</td><td>24</td><td>25</td><td>26</td> <td>22</td><td>23</td><td>24</td><td>25</td><td>26</td><td>27</td><td>28</td> </tr> <tr> <td>27</td><td>28</td><td>29</td><td>30</td><td>31</td><td></td><td></td> <td>29</td><td>30</td><td>31</td><td></td><td></td><td></td><td></td> </tr> </tbody> </table>	OCTOBER							DECEMBER							S	M	T	W	T	F	S	S	M	T	W	T	F	S			1	2	3	4	5	1	2	3	4	5	6	7	6	7	8	9	10	11	12	8	9	10	11	12	13	14	13	14	15	16	17	18	19	15	16	17	18	19	20	21	20	21	22	23	24	25	26	22	23	24	25	26	27	28	27	28	29	30	31			29	30	31					1	2
OCTOBER							DECEMBER																																																																																																	
S	M	T	W	T	F	S	S	M	T	W	T	F	S																																																																																											
		1	2	3	4	5	1	2	3	4	5	6	7																																																																																											
6	7	8	9	10	11	12	8	9	10	11	12	13	14																																																																																											
13	14	15	16	17	18	19	15	16	17	18	19	20	21																																																																																											
20	21	22	23	24	25	26	22	23	24	25	26	27	28																																																																																											
27	28	29	30	31			29	30	31																																																																																															
3 new moon ● Daylight Saving ends	4	5	6	7	8	9																																																																																																		
10 first quarter ◐	11 Veterans Day	12	13	14	15	16																																																																																																		
17 full moon ○	18	19	20	21	22	23																																																																																																		
24	25 last quarter ◑	26	27 Chanukah begins at sunset	28 Thanksgiving	29	30																																																																																																		
		<p>OIL FACT: Concentrations of 50 to 100 parts per million (ppm) of used oil can foul sewage treatment processes.</p>		<p>For recycling and/or disposal of used motor oil, filters, paints, pesticides, solvents, and other household hazardous wastes, visit one of the free collection facilities listed on the back cover, or call 1-800-CleanUp. You can also download a free iRecycle App on your iOS, iPad, or Android smartphone.</p>																																																																																																				

TAKE ACTION!

Help keep our Bay clean!

Go to www.savrbay.com or call 1-800-SAV-R-BAY (1-800-728-7229 ext 4) for proper disposal information on hazardous materials and for a complete list of drop-off locations in Marin for unused pharmaceuticals.

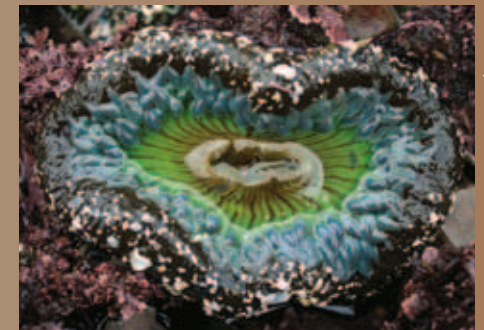


Keep Duxbury Reef Healthy



View of Duxbury Reef from Agate Beach Park, Bolinas; photo by Craig Solin.

Named after the sailing ship Duxbury, shipwrecked near Bolinas in 1849, **Duxbury Reef** is the largest and one of the most biologically rich soft shale reefs in California. To preserve this sensitive marine ecosystem, the reef is designated as an Area of Special Biological Significance, a protected area covering 875 ocean acres and extending along 3.8 miles of coast. This special area includes Marin County Agate Beach, where tide pools are full of vibrant and diverse marine life.



Timothy Wong

At a very low tide, look for giant green anemones or a bat sea star—an unusual variation—at Duxbury Reef.

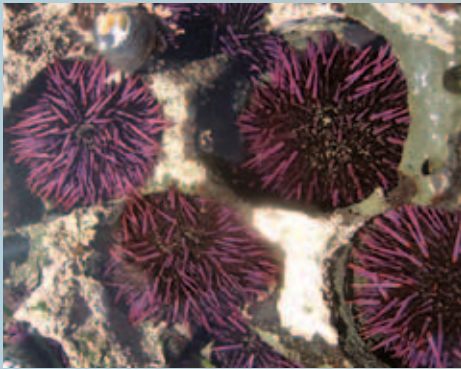
DECEMBER

Parking Lot Goes Green

Rainwater from the Agate Beach parking lot in Bolinas currently flows to Duxbury Reef. With grant funds, the County of Marin will improve runoff quality by replacing part of the lot with pervious concrete. Rainwater and pollutants will drain through the concrete lot into underground chambers. There, the water will seep into the soil and pollutants will degrade.

The grant also funds water quality improvement projects on Point Reyes National Seashore land near the reef.

Bolinas residents and visitors can help protect the reef by keeping pollutants and trash out of storm drains, creeks, and the ocean.



Purple sea urchins at Duxbury Reef have worn away the surrounding mudstone.

California Academy of Sciences

SUNDAY	MONDAY	TUESDAY	WEDNESDAY	THURSDAY	FRIDAY	SATURDAY																																																																																																		
1	2	3 new moon ●	4	5 Chanukah ends	6	7																																																																																																		
8	9 first quarter ☾	10	11	12	13	14																																																																																																		
15	16	17 full moon ○	18	19	20	21 Winter begins																																																																																																		
22	23	24	25 last quarter ☽ Christmas Day	26 Kwanzaa begins	27	28																																																																																																		
29	30	31 New Year's Eve	<table border="1"> <thead> <tr> <th colspan="7">NOVEMBER</th> <th colspan="7">JANUARY 2014</th> </tr> <tr> <th>S</th><th>M</th><th>T</th><th>W</th><th>T</th><th>F</th><th>S</th> <th>S</th><th>M</th><th>T</th><th>W</th><th>T</th><th>F</th><th>S</th> </tr> </thead> <tbody> <tr> <td></td><td></td><td></td><td></td><td></td><td>1</td><td>2</td> <td></td><td></td><td></td><td>1</td><td>2</td><td>3</td><td>4</td> </tr> <tr> <td>3</td><td>4</td><td>5</td><td>6</td><td>7</td><td>8</td><td>9</td> <td>5</td><td>6</td><td>7</td><td>8</td><td>9</td><td>10</td><td>11</td> </tr> <tr> <td>10</td><td>11</td><td>12</td><td>13</td><td>14</td><td>15</td><td>16</td> <td>12</td><td>13</td><td>14</td><td>15</td><td>16</td><td>17</td><td>18</td> </tr> <tr> <td>17</td><td>18</td><td>19</td><td>20</td><td>21</td><td>22</td><td>23</td> <td>19</td><td>20</td><td>21</td><td>22</td><td>23</td><td>24</td><td>25</td> </tr> <tr> <td>24</td><td>25</td><td>26</td><td>27</td><td>28</td><td>29</td><td>30</td> <td>26</td><td>27</td><td>28</td><td>29</td><td>30</td><td>31</td><td></td> </tr> </tbody> </table>		NOVEMBER							JANUARY 2014							S	M	T	W	T	F	S	S	M	T	W	T	F	S						1	2				1	2	3	4	3	4	5	6	7	8	9	5	6	7	8	9	10	11	10	11	12	13	14	15	16	12	13	14	15	16	17	18	17	18	19	20	21	22	23	19	20	21	22	23	24	25	24	25	26	27	28	29	30	26	27	28	29	30	31			
NOVEMBER							JANUARY 2014																																																																																																	
S	M	T	W	T	F	S	S	M	T	W	T	F	S																																																																																											
					1	2				1	2	3	4																																																																																											
3	4	5	6	7	8	9	5	6	7	8	9	10	11																																																																																											
10	11	12	13	14	15	16	12	13	14	15	16	17	18																																																																																											
17	18	19	20	21	22	23	19	20	21	22	23	24	25																																																																																											
24	25	26	27	28	29	30	26	27	28	29	30	31																																																																																												

Linda Morley-Wells



OIL FACT: In 1986, California passed SB 86 which made it illegal to dispose of used oil in sewer and drain systems, bodies of water, the landfill, or by burning it for fuel.

For recycling and/or disposal of used motor oil, filters, paints, pesticides, solvents, and other household hazardous wastes, visit one of the free collection facilities listed on the back cover, or call 1-800-CleanUp. You can also download a free iRecycle App on your iOS, iPad, or Android smartphone.

TAKE ACTION!

Take out only what you came with!

Remember not to remove or disturb any wildlife from the grounds, beaches, or tide pools. Tread lightly, and deposit trash in receptacles or take it with you.

USED MOTOR OIL AND FILTER COLLECTION

The following locations accept used motor oil, filters, batteries, and antifreeze as indicated. Call center for hours of operation and quantities accepted. For more information, call 1-800-CLEANUP or visit www.mcstoppp.org.

- Do NOT mix used oil with any other substance, including antifreeze. Doing so may mean the used oil can't be recycled. Keep used motor oil in a separate container.
- If your oil is contaminated with another substance, bring it to the Household Hazardous Waste Facility.

KEY CODE: C = State certified collection ctr.
O = Used motor oil
F = Oil filters
A = Antifreeze
B = Car batteries



CITY	NAME	ADDRESS	PHONE	KEY CODE
Corte Madera	D & K Auto Services	34 Corte Madera Ave.	924-3510	C O F A B
Mill Valley	Jiffy Lube	374 Miller Ave.	383-6416	C O F
Novato	O'Reilly Auto Parts*	1400 S. Novato Blvd.	897-5338	C O B
	Novato Recycling Center	7576 Redwood Blvd.	892-7344	O F A B
	Oil Changer	133 Vintage Way	897-0134	C O
	Pennzoil 10-Min.Oil Change	908 Diablo Ave.	898-5823	C O F A B
	Ron Cromwell Chevron	1549 S. Novato Blvd.	892-5393	C O F
Pt. Reyes Station	Bracken Auto Service	11401 State Route 1	663-0633	C O F A B
San Rafael	Heyneman European	3155 Kerner Blvd.	499-1234	C O F A B
	O'Reilly Auto Parts*	75 N. Bellam Blvd.	454-5881	C O F B
	O'Reilly Auto Parts*	1323 2nd St.	454-2963	C O B
	HHW Facility	565 Jacoby St.	485-6806	O F A B
*formerly Kragen	Pennzoil 10-Min.Oil Change	1524 Second St.	457-5823	C O F A B



WASTEWATER TREATMENT PLANTS AND SANITARY DISTRICTS

www.savrbay.com

Almonte Sanitary District	388-8775
Alto Sanitary District	388-3696
Bolinas County Public Utility	868-1224
Central Main Sanitation	459-1455
City of Belvedere	435-3838
City of Mill Valley	388-4033
City of Sausalito	289-4111
County Sewer Maintenance District	473-6524
Homestead Sanitary District #1	388-4796
Las Gallinas Valley Sanitary District	472-1734
Novato Sanitary District	892-1694
North Marin Water District	897-4133
Richardson Bay Sanitary District	388-1345
Sanitary District #1 (Ross Valley)	461-1122
Sanitary District #2 (Corte Madera)	927-5057
Sanitary District #5 (Tiburon)	435-1501
San Rafael Sanitary District	454-4001
Sausalito-Marín City Sanitary District	332-0244
Sewerage Agency of So. Marin	388-2402
Tamalpais Com. Service District	388-6393

STORMWATER CONTACTS FOR ILLEGAL DISCHARGES

To report illegal discharges to storm drains, creeks, or wetlands, call the numbers below or file a complaint online at www.mcstoppp.org. After normal business hours, call the County Sheriff's non-emergency line at 415-499-7233.

Belvedere	435-3838
County of Marin	473-6528
Corte Madera	927-5057
Fairfax	453-1584
Larkspur	927-5017
Mill Valley	388-4033
Novato	899-8246
Ross	453-1453 ext. 163
San Anselmo	258-4600
San Rafael	485-3355
Sausalito	289-4100 ext. 106
Tiburon	435-7399

HOUSEHOLD HAZARDOUS WASTE (HHW) DISPOSAL FACILITIES

Household hazardous waste such as TVs, computer monitors, pesticides, paint, anti-freeze, used oil and filters, aerosol sprays, fluorescent tubes, and solvents can be brought to the facilities listed below. No fees are charged for residential drop-off.

Items not accepted include: explosives, ammunition (call the police department), radioactives, compressed gas cylinders (BBQ propane cylinders are accepted), bio-waste, infectious waste, and laboratory waste. For disposal of pharmaceuticals, sharps, syringes, and controlled substances, see lower left on this page. If you are unsure whether an item will be accepted, call first.

ALL OF MARIN (except Novato)

Marin Household Hazardous Waste Facility

565 Jacoby Street, San Rafael, 415-485-6806
Funded by the Marin County Solid and Hazardous Waste Joint Powers Authority

Satellite Sites: Once a year, one day, 40-cars-by-appointment events will be held at Bolinas, Point Reyes, and Woodacre. Call 415-485-3309 for dates.

NOVATO RESIDENTS ONLY

Novato Household Hazardous Waste Facility

7576 Redwood Blvd., Novato, 415-892-7344
Funded by Novato Sanitary District and City of Novato; www.novatosan.com

Open 8:30 a.m.–1:30 p.m. on the 1st and 3rd Sundays and Mondays of each month. Call for specific dates and materials accepted.

DISPOSE OF PHARMACEUTICALS, SHARPS AND SYRINGES

For the most up-to-date list, go to <http://tinyurl.com/96l98vy>

P Pharmaceuticals **S** Sharps and syringes

Golden Gate Pharmacy P	Novato Police Dept. P
HHW Facility, Novato P* S	Pharmaca Integrative S
HHW Facility, San Rafael S	Ross Valley Pharmacy P S
Jack's Drugs P S	Safeway Pharmacies S
Kaiser Perm. Pharmacies S	Sausalito Police Dept. P
Lucky Pharmacy, Larkspur P S	Sheriff's Office/Coroner P**
Marin AIDS Project S	Twin Cities Police Authority P
Marin Com. Clinics Pharm. S	Walgreens Pharmacies S
Marin Med. Pharmacy P S	West Marin Pharmacy P S
Mill Valley Police Dept. P	* Over-the-counter meds only
Novato Community Hospital S	** No liquids

DISPOSE OF CONTROLLED SUBSTANCES

Mill Valley Police Dept.
Novato Police Dept.
Sausalito Police Dept.
Twin Cities Police Authority



Printed on recycled paper.

BUSINESS HAZARDOUS WASTE

Businesses generating very small amounts of hazardous waste can use the Household Hazardous Waste Facility in San Rafael or Novato by appointment. A fee will be charged at both facilities. To participate, a business must acquire and provide an EPA ID number. Numbers can be obtained at 1-800-618-6942, or get Form 1358 at http://www.dtsc.ca.gov/IDManifest/ID_Numbers.cfm.

For San Rafael, call 485-5648

For Novato, call 892-6395