

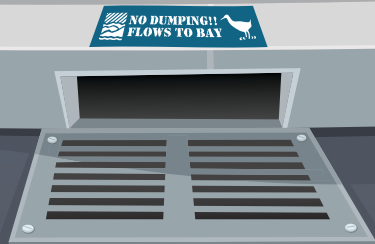
Only Clean Rain Down the Drain

The following are prohibited:

- Any discharge to a public or private storm drain system not composed entirely of clean stormwater.
- Allowing any materials, debris, wash water, or wastes to enter a storm drain.
- Littering or storing trash or recycling items in any area other than in an enclosed, leakproof container or dumpster in an approved disposal area.
- Allowing excessive amounts of litter, trash, or debris to accumulate around the premises including storefronts, parking lots, receiving areas, alleys, driveways landscaped areas, and sidewalks.

Staying in compliance helps your business and keeps our community clean.

Note: If you are a person with a disability and require materials in alternative formats, please call (415) 473-4381 (voice) or CRS 711 or email disabilityaccess@marincounty.org



Special thanks to the City of Sunnyvale for the use of this brochure.

FOR POLLUTION PREVENTION TIPS

visit www.mcstoppp.org and click on **Community Resources** to find more Business pollution prevention tips.

FOR MORE INFORMATION

call MCSTOPPP at (415) 473-6528

For overflowing bins or to increase the size of bin or frequency of pick-up contact your Solid Waste provider at zerowastemarin.org/residents/who-is-my-hauler

To report a witnessed illegal dumping visit www.mcstoppp.org and look under Illegal Discharge? On the Home Page



DO YOUR PART TO STOP LITTER

Litter can flow through storm drains into creeks and the Bay, causing water pollution and harm to wildlife.

KEEP THE LID ON LITTER by ensuring your facility, storefront, and property are clean.

Keep the Lid on Litter

- Choose the right size and pick-up frequency for bins.
- Don't allow bins to overflow.
- Keep lids closed on bins to keep rain from getting in and trash blowing out.
- Do not stack materials outside of the bins.
- Consider a locking bin if there is a problem with illegal dumping. You may also want to consider fencing, roofing, or video surveillance.
- Remove illegally dumped materials immediately.

Train for Success

- Train staff to inspect the parking and landscaped areas on and around the perimeter of your business for litter regularly. If litter is found, collect and put in trash bins.
- Empty trash receptacles regularly.
- Have maintenance staff to do a thorough collection of litter in the landscaped areas.

Cigarette Butts are a Big Problem

- Sweep often and dispose of collected cigarette butts.
- Remove cigarette butts from landscaped areas and parking medians.
- Consider addition of cigarette receptacles.

