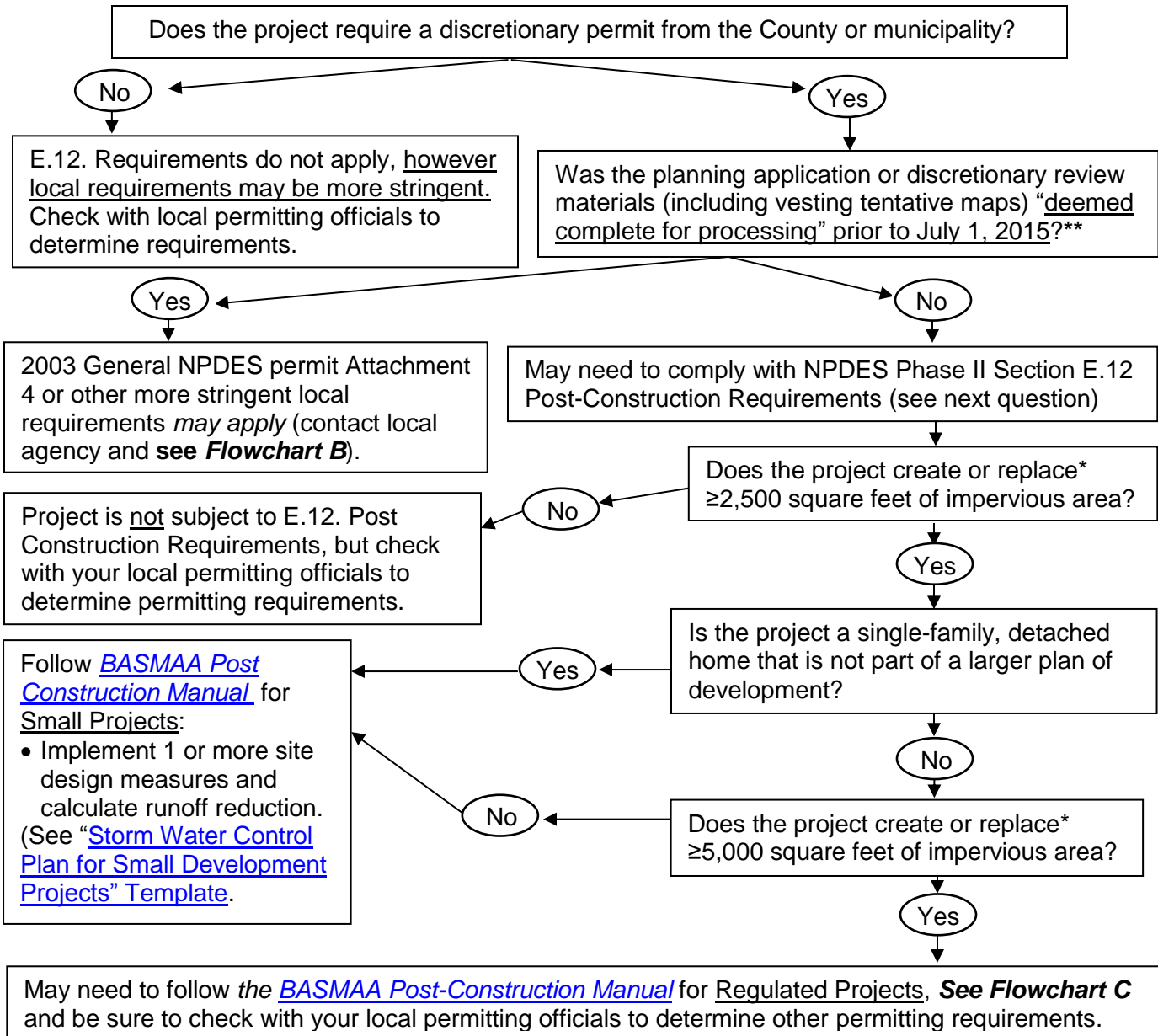


E.12. Post-Construction NPDES Stormwater Requirements

Flowchart A



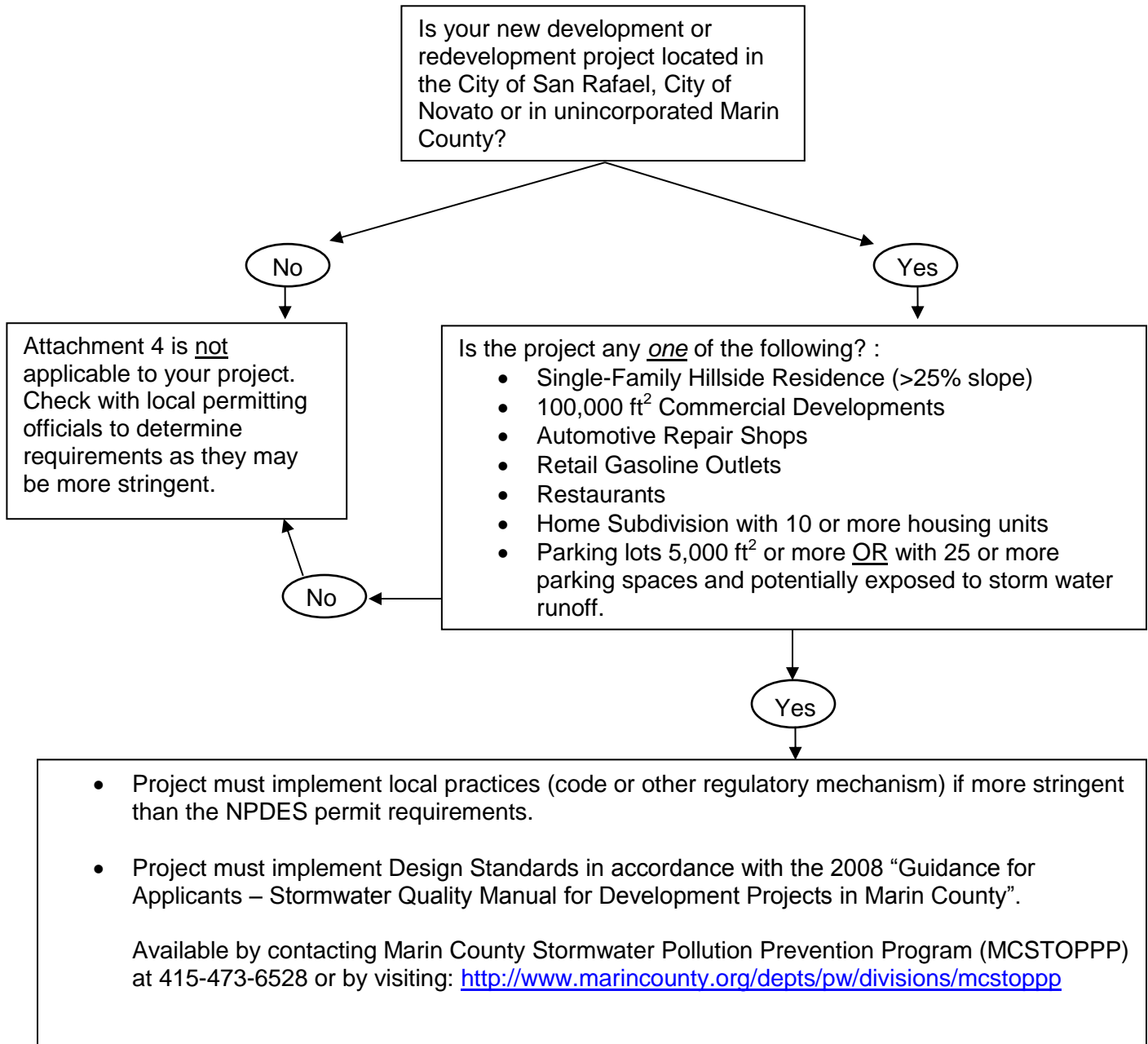
Type of Project	Requirements
Small Project or Single Family Residence (i.e. project requiring Site Design Measures)	<ul style="list-style-type: none"> • Limit clearing, grading and soil compaction • Minimize impervious surfaces • Disperse runoff to landscape • Conserve natural areas of the site as much as possible consistent with local General Plan policies • Comply with stream setback ordinances/requirements • Protect slopes and channels against erosion
"Regulated" Project	<ul style="list-style-type: none"> • <u>All</u> of the Small Project Requirements PLUS • Route runoff to bioretention facilities sized and designed according to criteria in Chapter 4 • Identify potential sources of pollutants and implement corresponding source control measures listed in Appendix A • Provide for ongoing maintenance of bioretention facilities.

*"Create or replace impervious area" does NOT include routine maintenance or repair such as roof replacement, exterior wall surface replacement, or pavement resurfacing without changing existing impervious footprint.

**If the planning application has not been deemed complete by June 30, 2016, Permittee may also need to comply with hydromodification requirements. See Flowchart E to determine applicability.

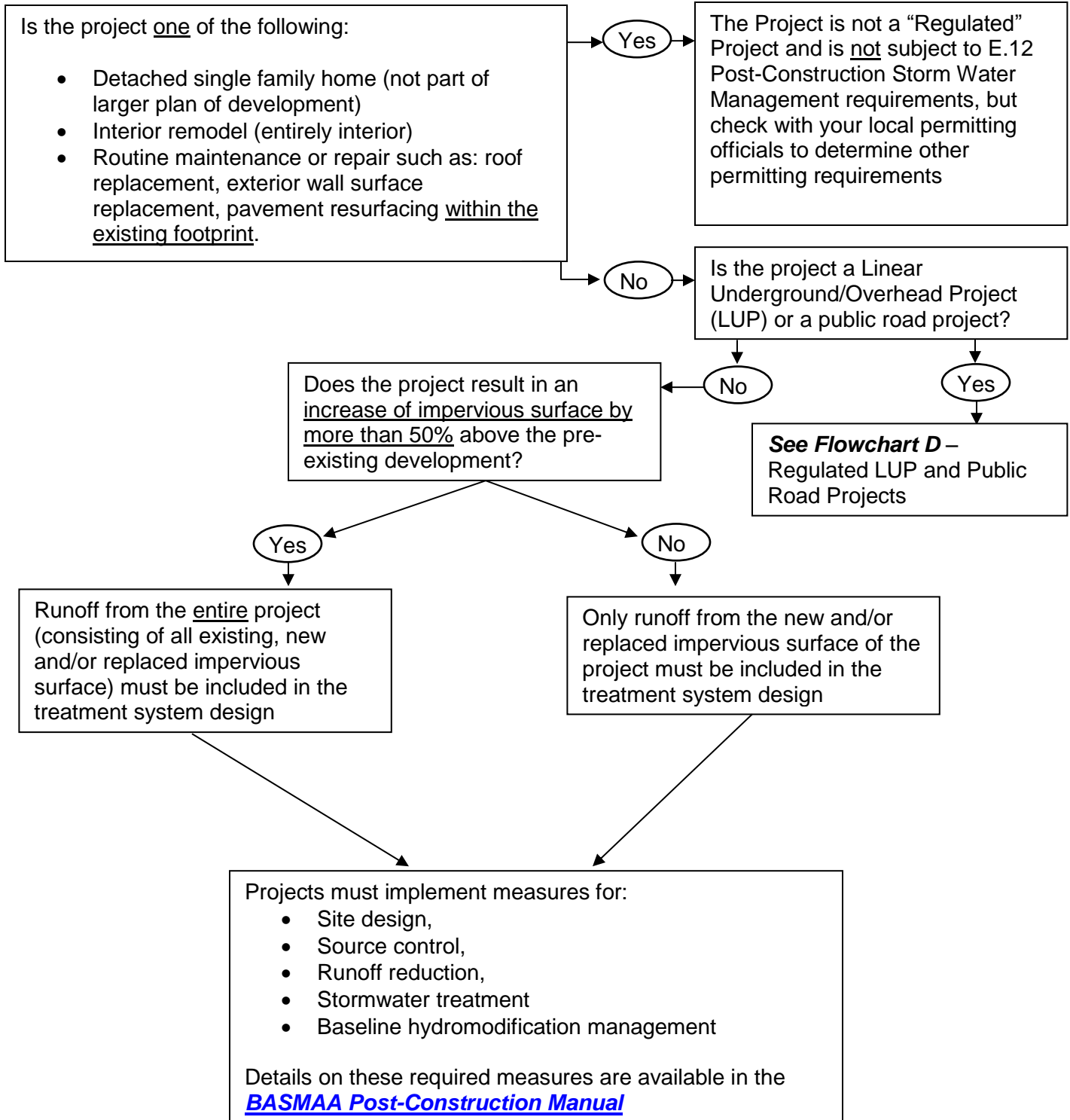
Post-Construction NPDES Stormwater Requirements
Flowchart B

Use this flowchart if the following two conditions are met: 1) your development or redevelopment project requires a discretionary permit from the County or municipality, **AND** 2) your **planning application or discretionary review materials (including vesting tentative maps) were “deemed complete for processing” prior to July 1, 2015.**



E.12. Post-Construction NPDES “Regulated” Project Requirements
Flowchart C

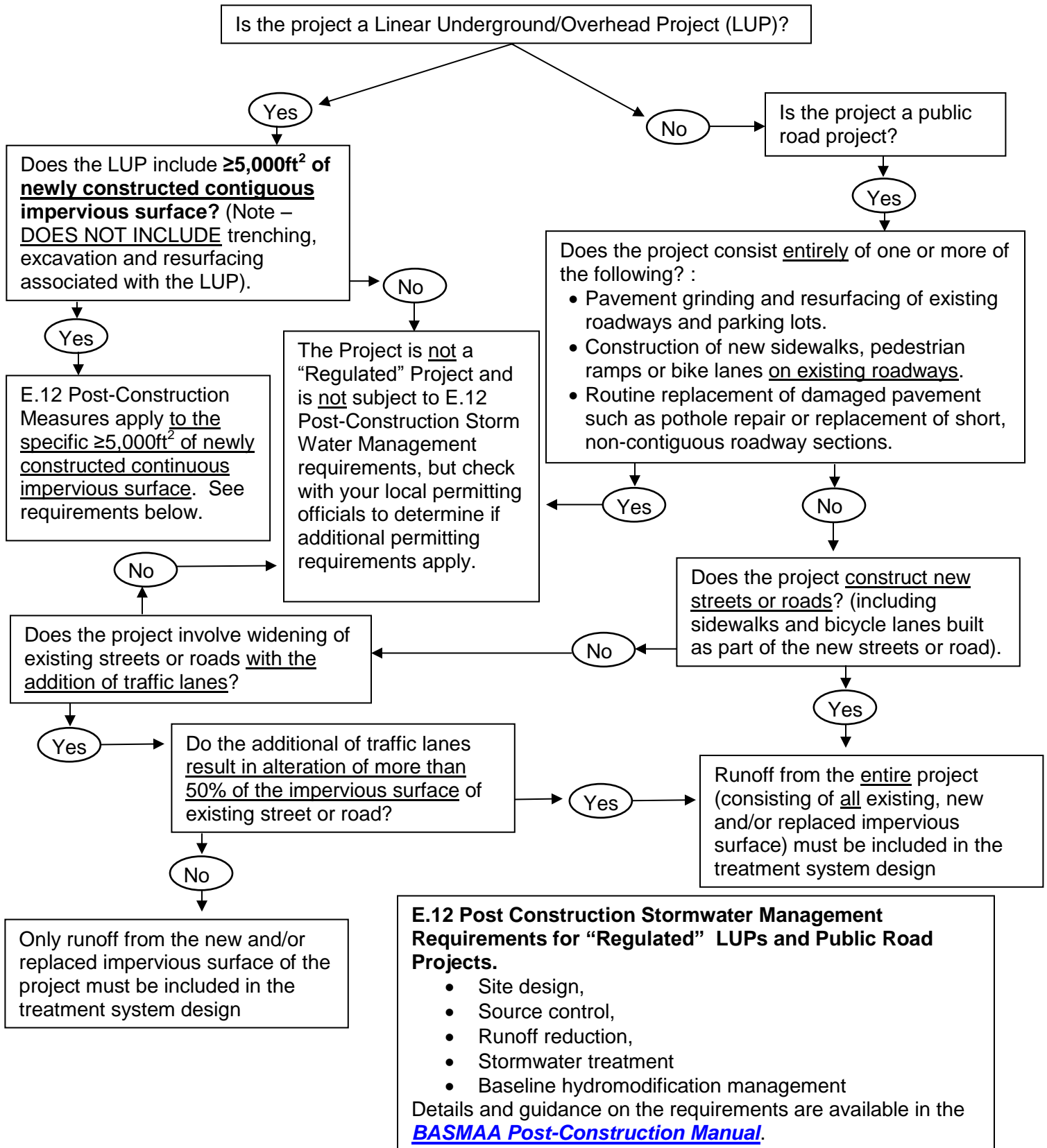
If the result of following flowchart A was that your project: “May need to follow [BASMAA Post-Construction Manual](#) for Regulated Projects” use the following flowchart to determine specific Regulated Project requirements and/or exclusions.



E.12. Post-Construction NPDES “Regulated” Public Road Project and Linear Overhead/Underground Project Requirements

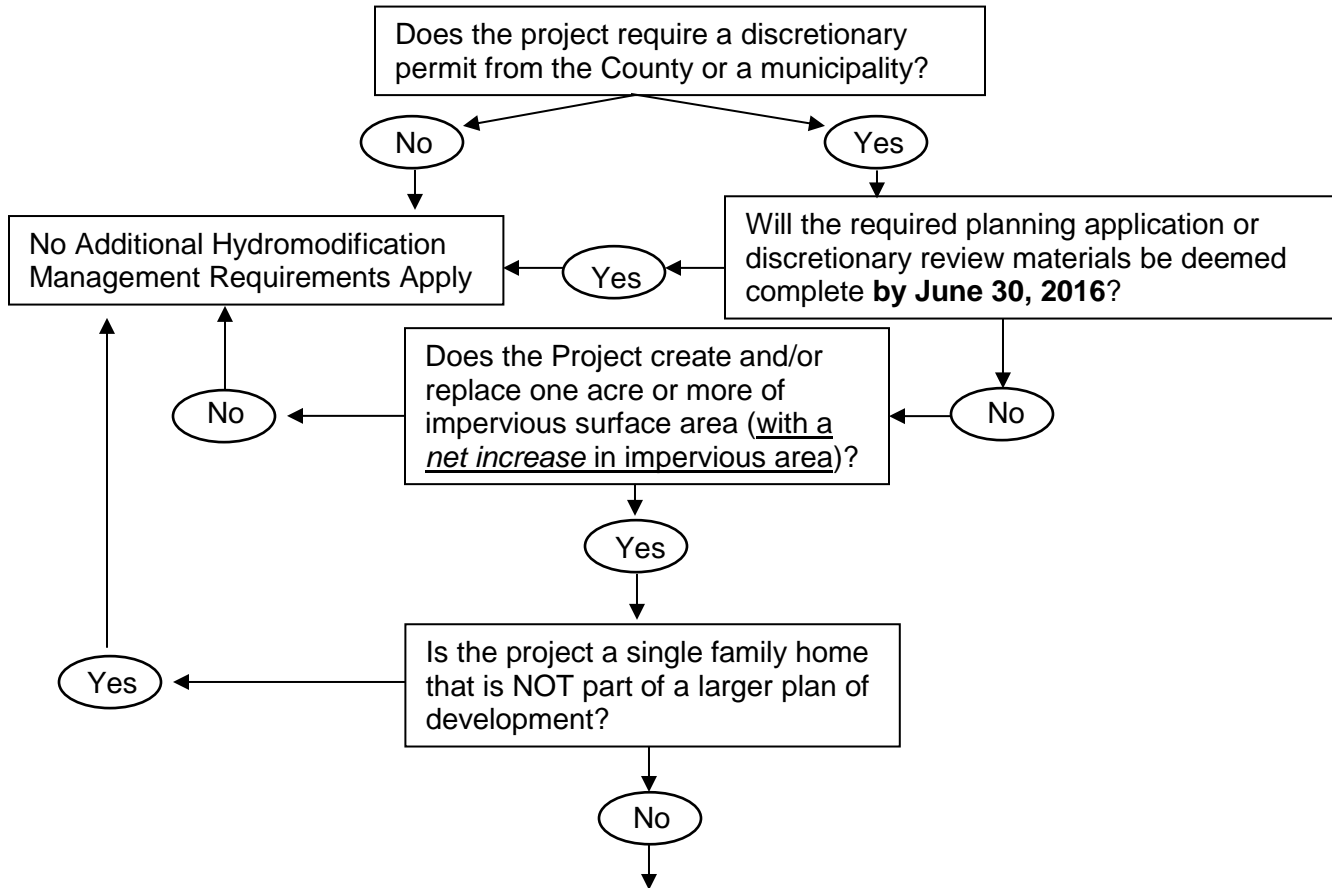
Flowchart D

Use this flowchart if your project creates or replaces $\geq 5,000 \text{ ft}^2$ of impervious area (flowchart A) AND is a public road project or Linear Underground/Overhead Project (LUP) (flowchart C)



E.12. Post-Construction NPDES Hydromodification Requirements
Flowchart E

Use this flowchart to determine if hydromodification management requirements will apply to the project.



The Project is a Regulated Hydromodification Management Project and is required to follow the [BASMAA Post Construction Manual](#)

You will be required to:

- Prepare a Stormwater Control Plan using the templates in the manual
- Design site with appropriate source controls
- Implement site design measures to achieve infiltration, evapotranspiration and/or harvesting/reuse of the 85th percentile 24-hour storm runoff event to the extent technically feasible.
- Treat remaining runoff with bioretention facilities
- Post-project runoff shall not exceed estimated pre-project flow rate for the 2-hour, 24-hour storm.